



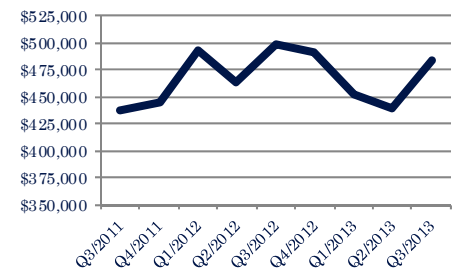
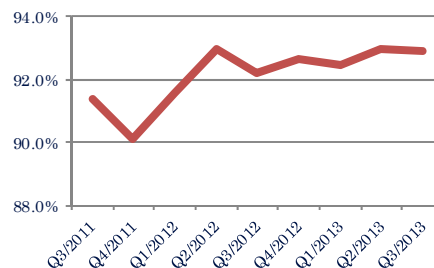
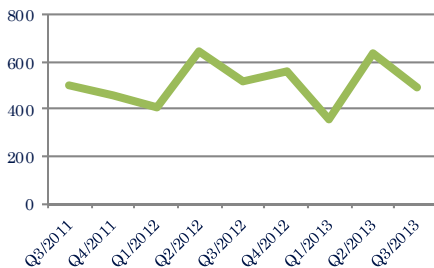
CAPE MAY COUNTY MARKET SUMMARY

Focus On: Cape May County and Selected Cities July 1st – September 30th 2013

Units Sold
496

Average Sale Price/List Price Ratio
92.9%

Average Sale Price
\$484,063

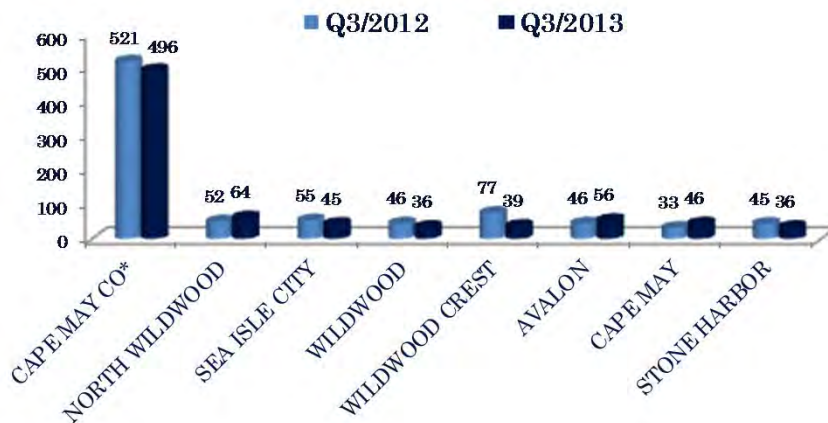


Down -4.8%
Vs. Year Ago

Up 0.7%
Vs. Year Ago

Down -3.0%
Vs. Year Ago

Units Sold

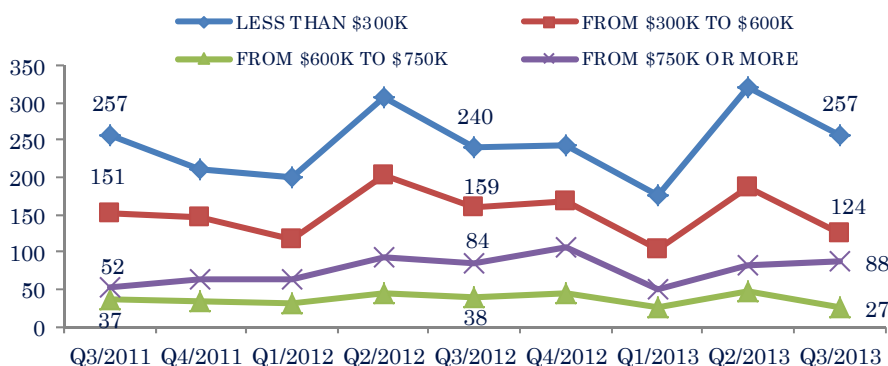


Units Sold

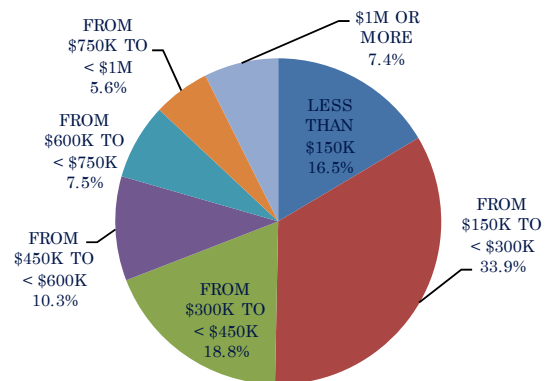
There was an decrease in total units sold in the third quarter, with 496 sold this quarter versus 521 in the third quarter of last year, a decrease of 4.8%.

This quarter's total units was less than last quarter, a decrease of 22.3%.

Units Sold



% of Total Market



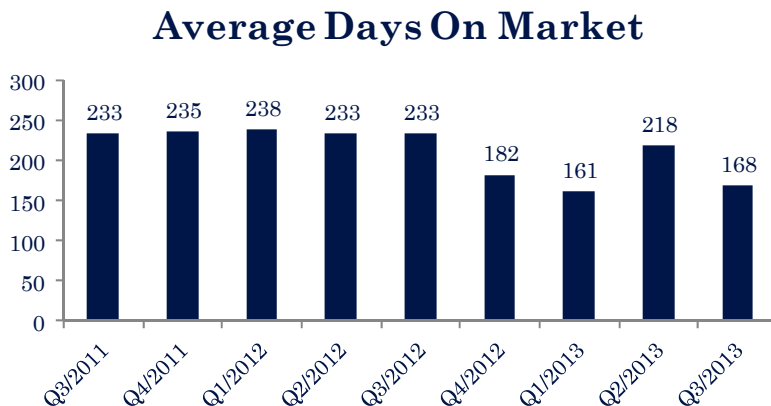
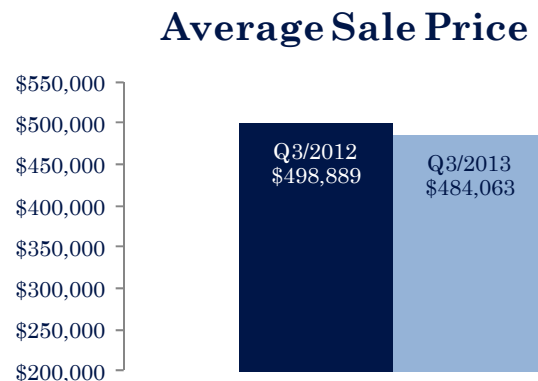
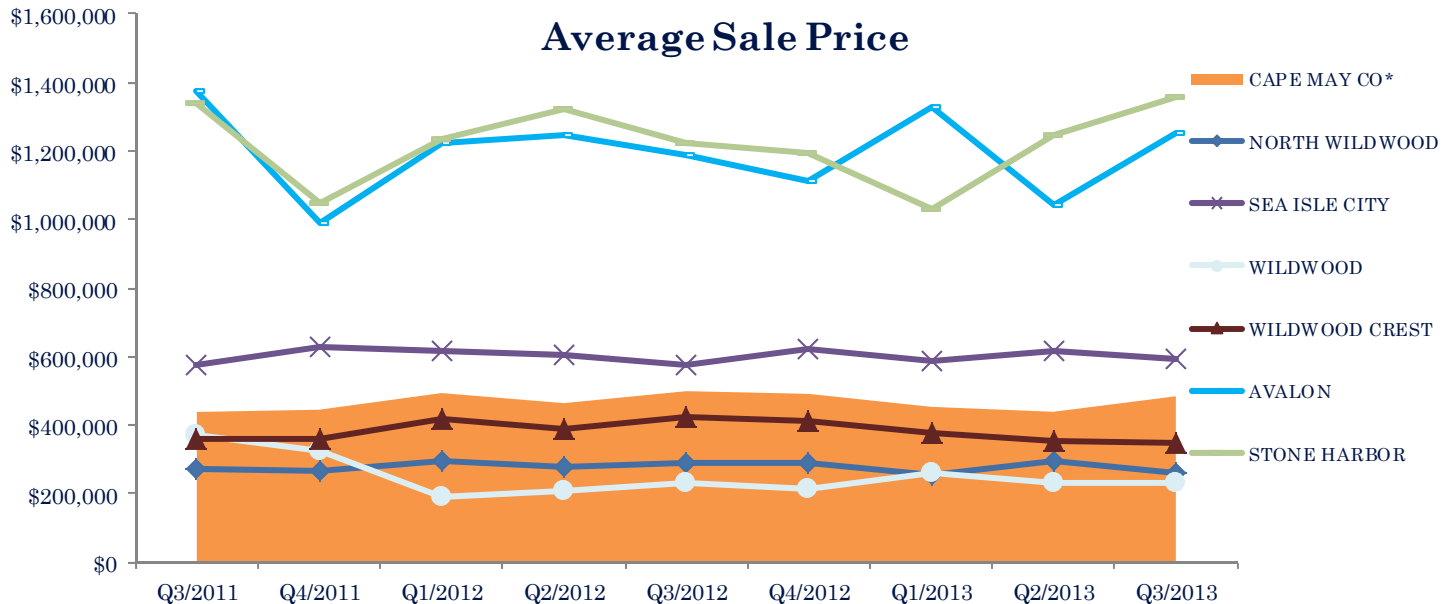
* Represents the summary figure for Cape May County. Data for Avalon, Cape May, Sea Isle City, Wildwood, North Wildwood, and Wildwood Crest are broken out for display purposes. They are included in the Cape May County summary figures and do not represent all transactions in the county. Information included in this report is based on data supplied by Cape May MLS, and its member Association(s) of REALTORS, who are not responsible for its accuracy. Does not reflect all activity in the marketplace. "Information contained in this report is deemed reliable but not guaranteed, should be independently verified, and does not constitute an opinion of New River Valley MLS or Long & Foster Real Estate, Inc."





CAPE MAY COUNTY MARKET SUMMARY

Focus On: Cape May County and Selected Cities July 1st – September 30th 2013



Days on Market

This quarter, the average number of days on market was 168, a decrease of 27.9% from the average in the third quarter last year, which was 233.

* Represents the summary figure for Cape May County. Data for Avalon, Cape May, Sea Isle City, Wildwood, North Wildwood, and Wildwood Crest are broken out for display purposes. They are included in the Cape May County summary figures and do not represent all transactions in the county. Information included in this report is based on data supplied by Cape May MLS, and its member Association(s) of REALTORS, who are not responsible for its accuracy. Does not reflect all activity in the marketplace. "Information contained in this report is deemed reliable but not guaranteed, should be independently verified, and does not constitute an opinion of New River Valley MLS or Long & Foster Real Estate, Inc."

